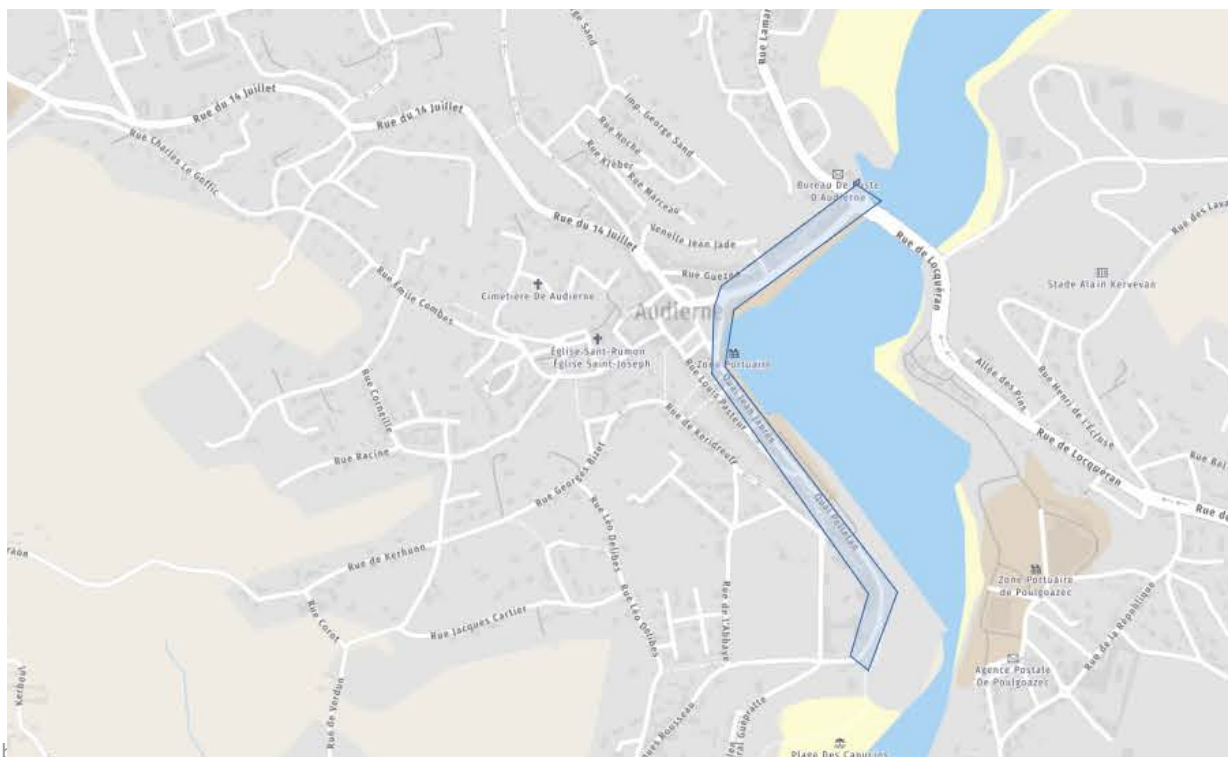


ANNEXE

APPLICATION DU III DE L'ARTICLE 2

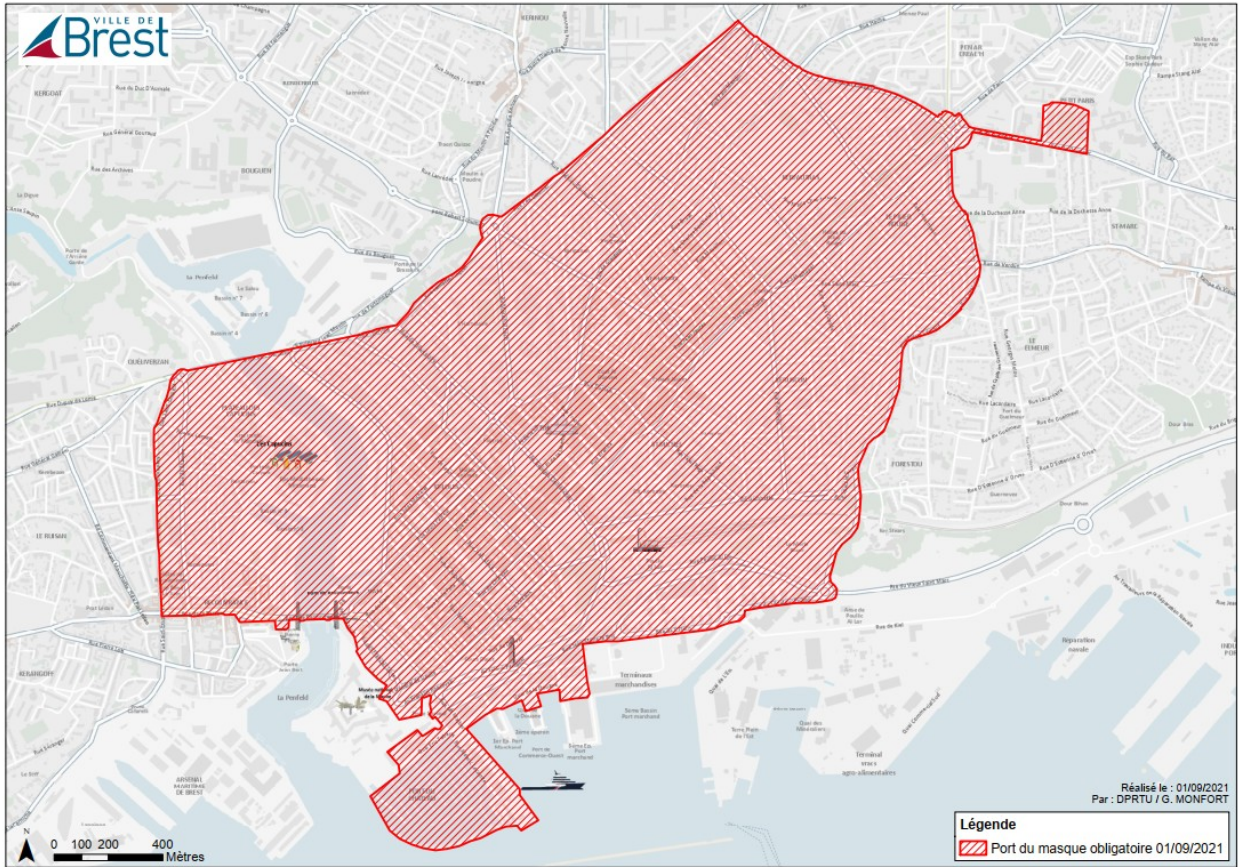
AUDIERNE



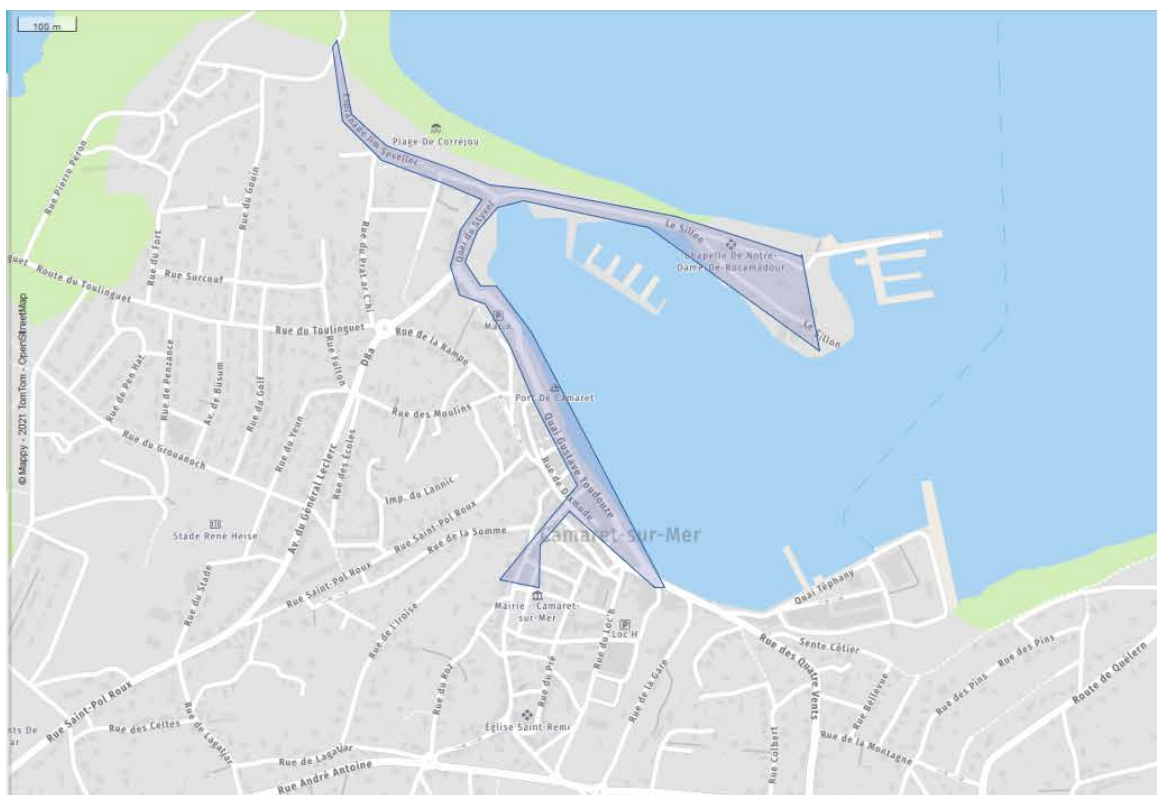
BENODET



BREST

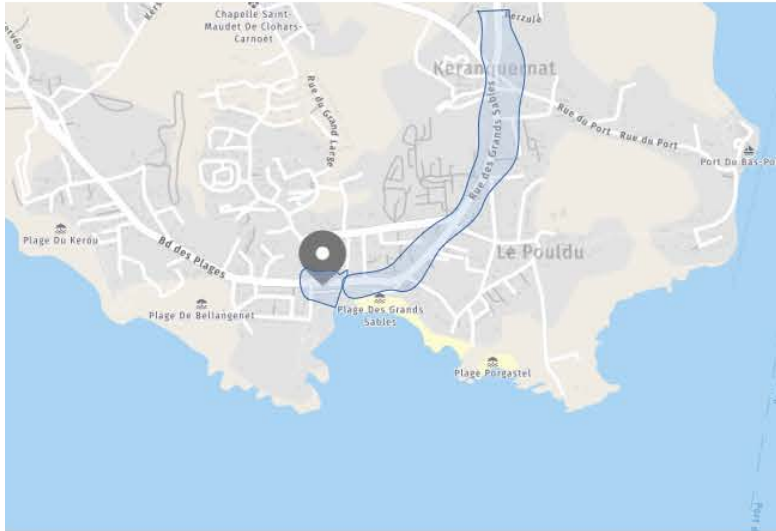


CAMARET SUR MER

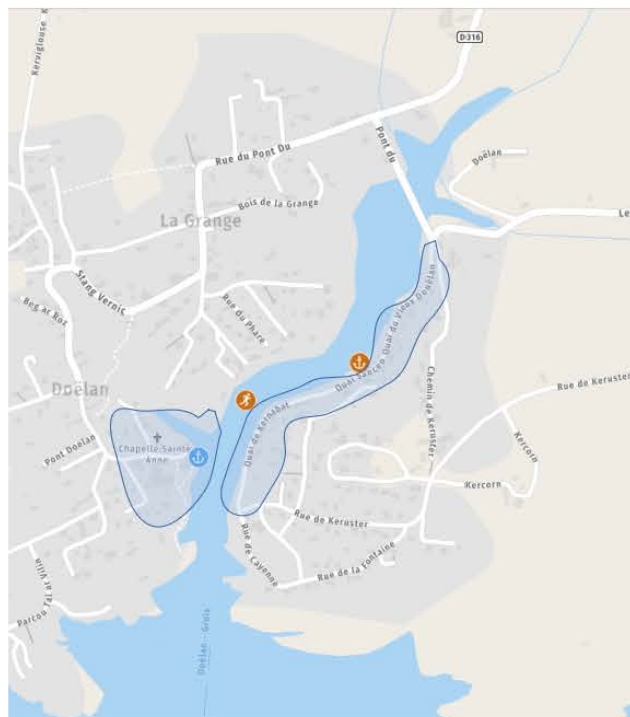


CLOHARS-CARNOËT

LE POULDU



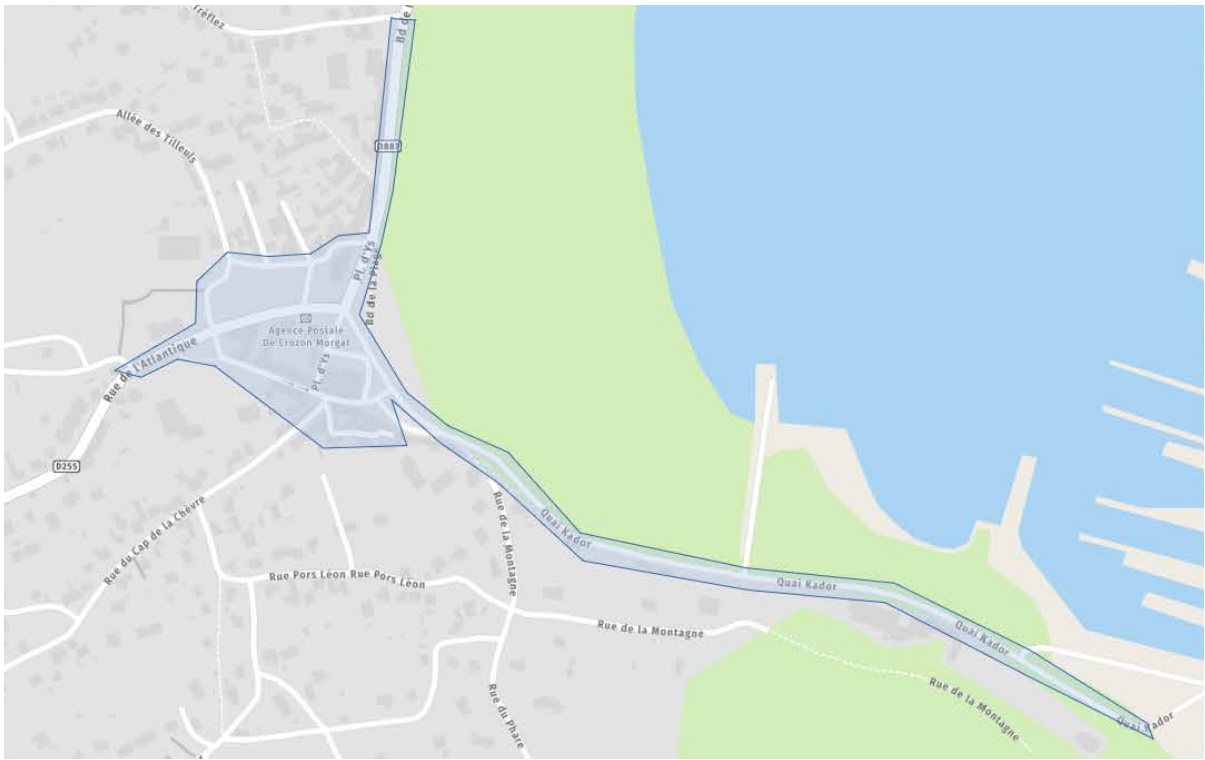
DOELAN



COMBRIT SAINTE-MARINE



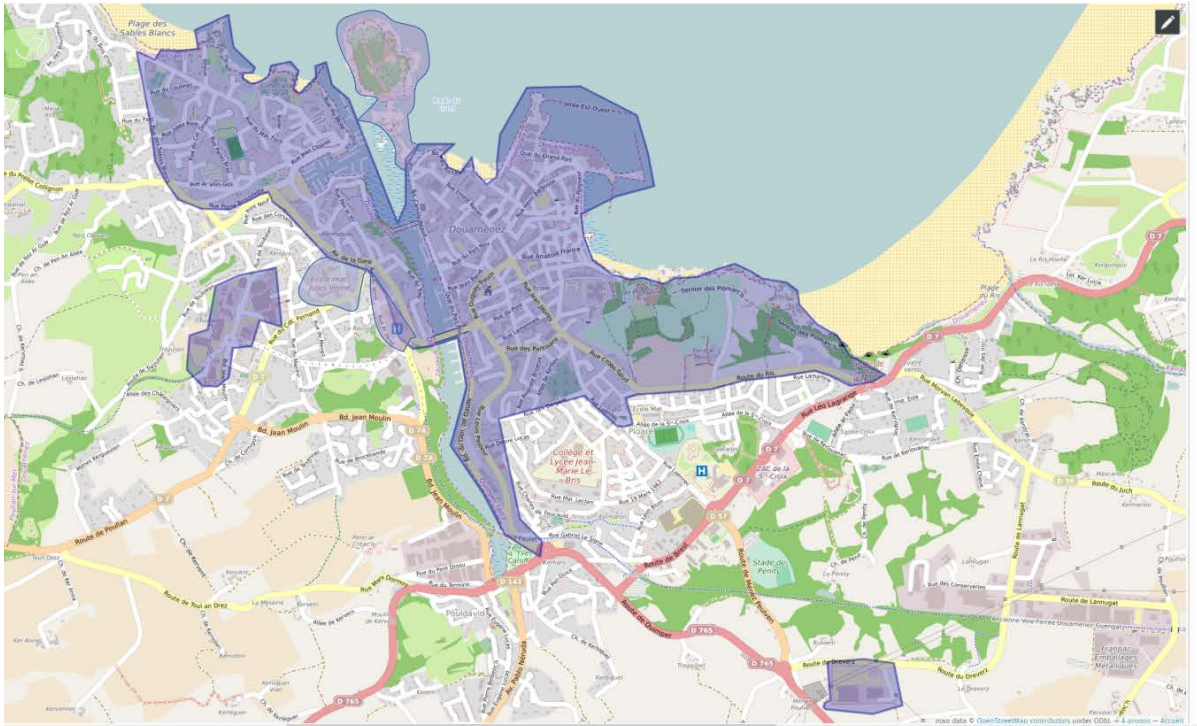
CROZON



CONCARNEAU

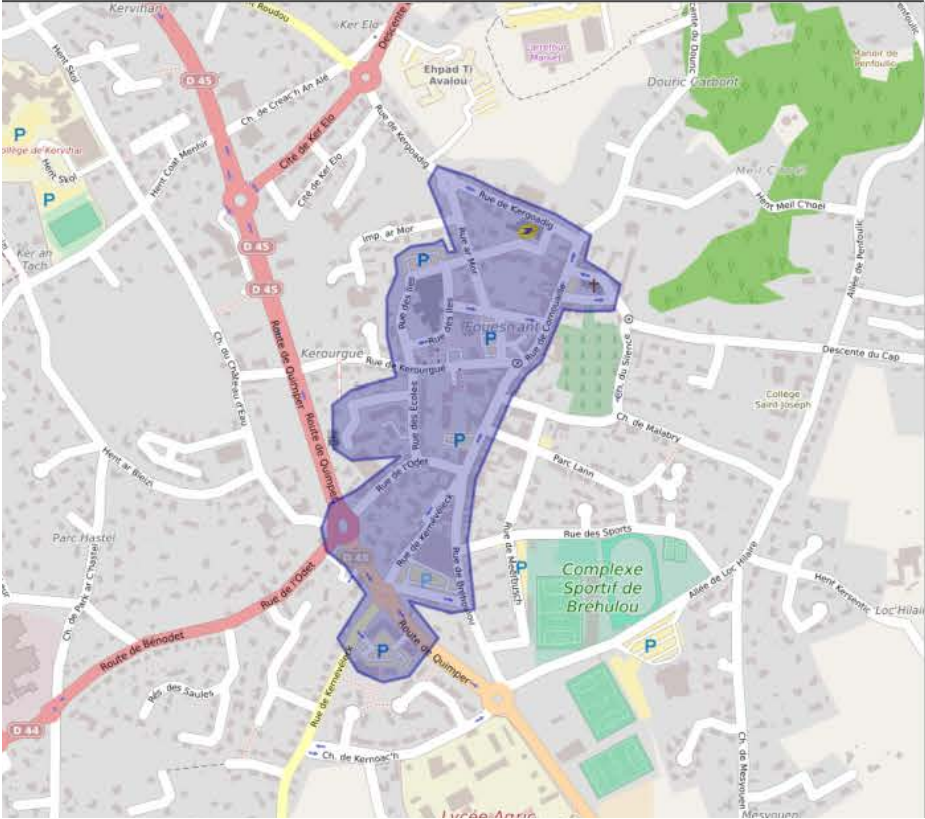


DOUARNENEZ



FOUESNANT

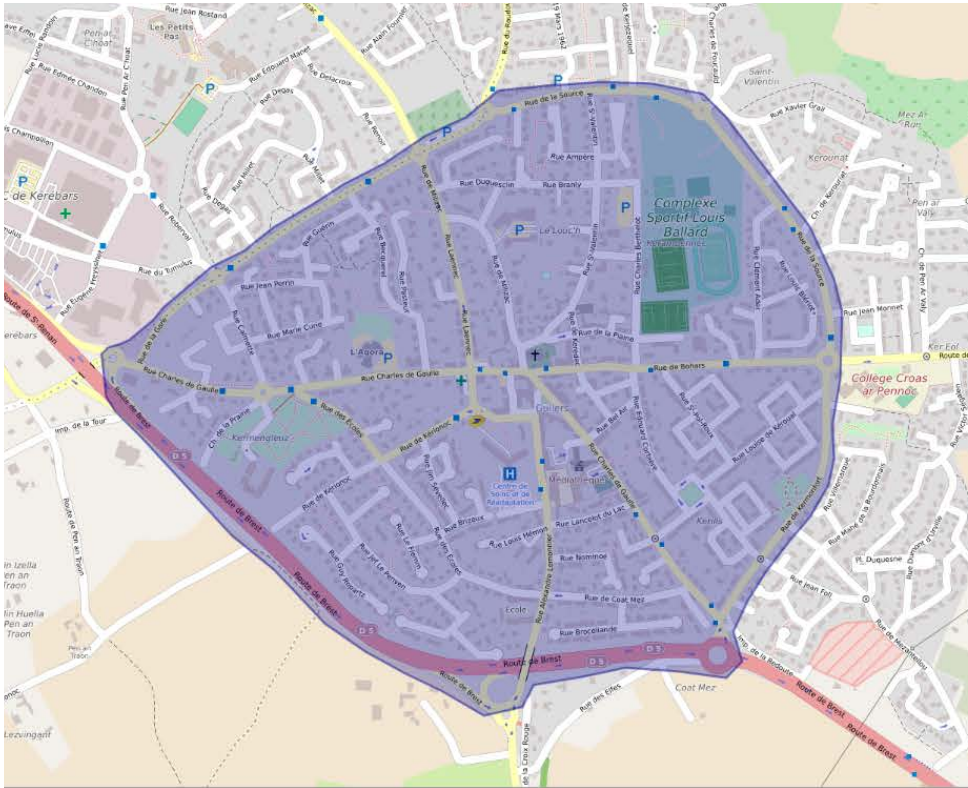
Centre-ville de Foesnant



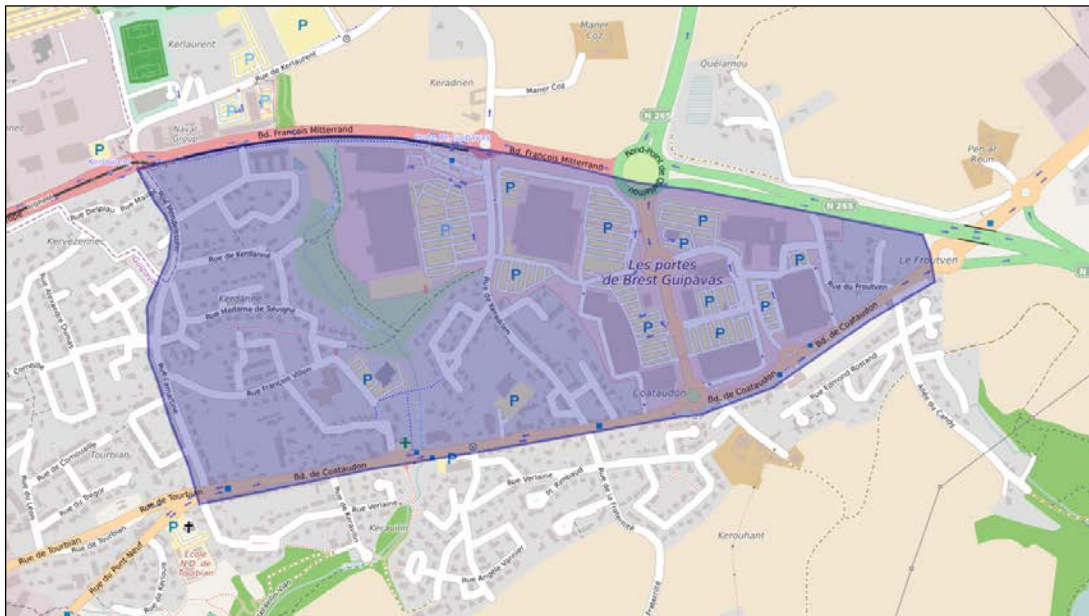
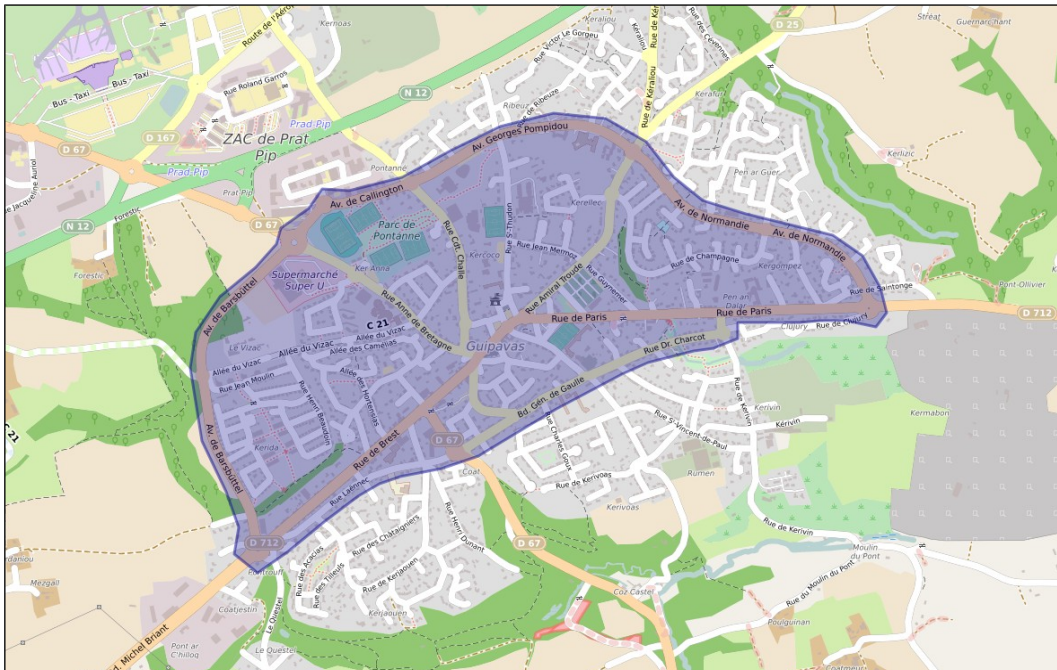
Beg Meil



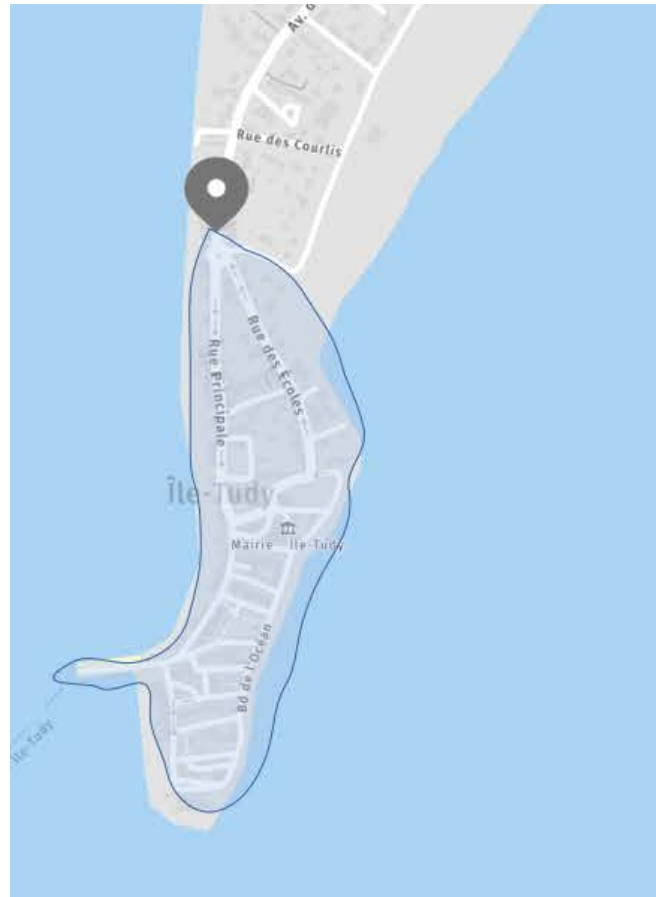
GUILERS



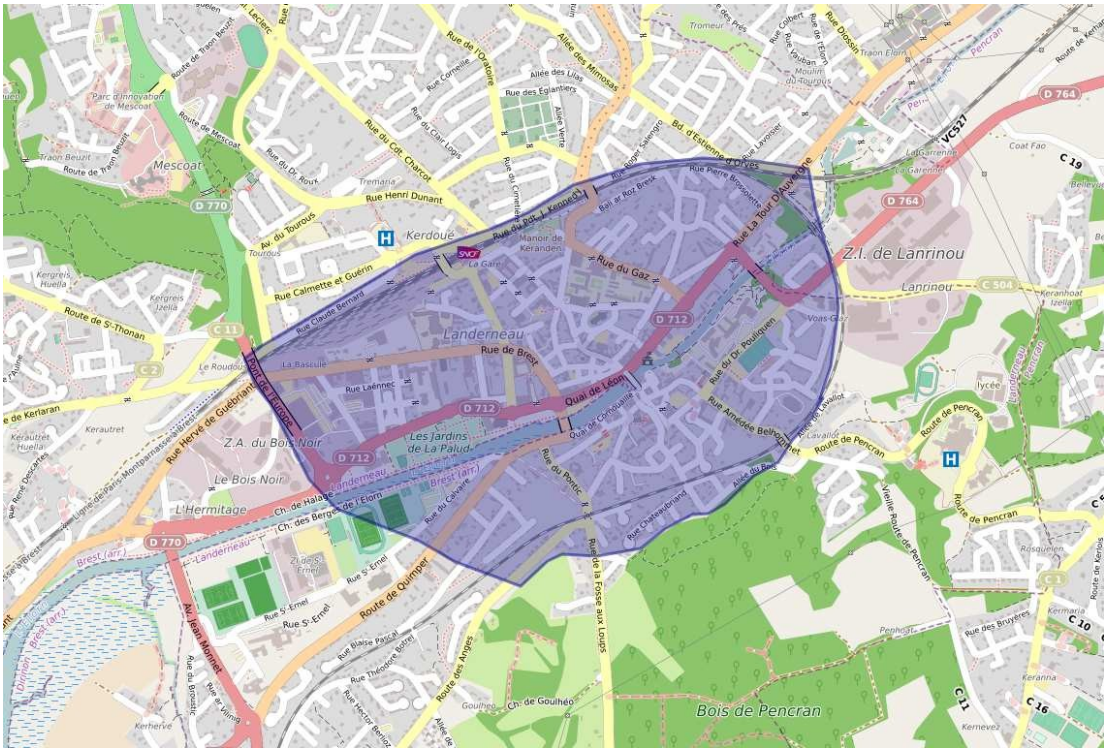
GUIPAVAS



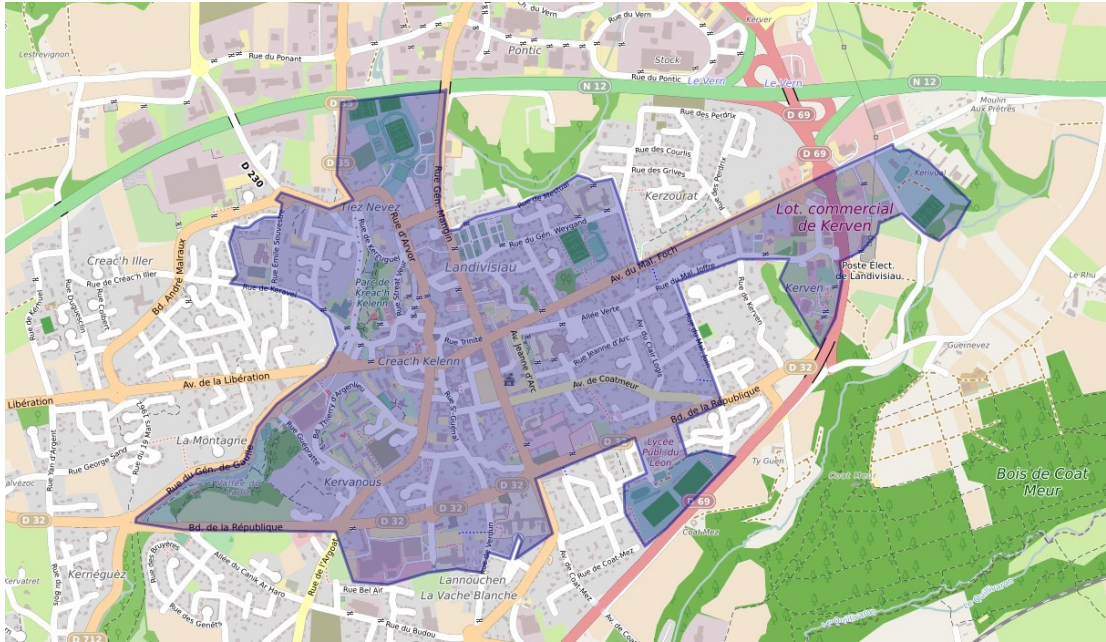
ILE TUDY



LANDERNEAU



LANDIVISIAU



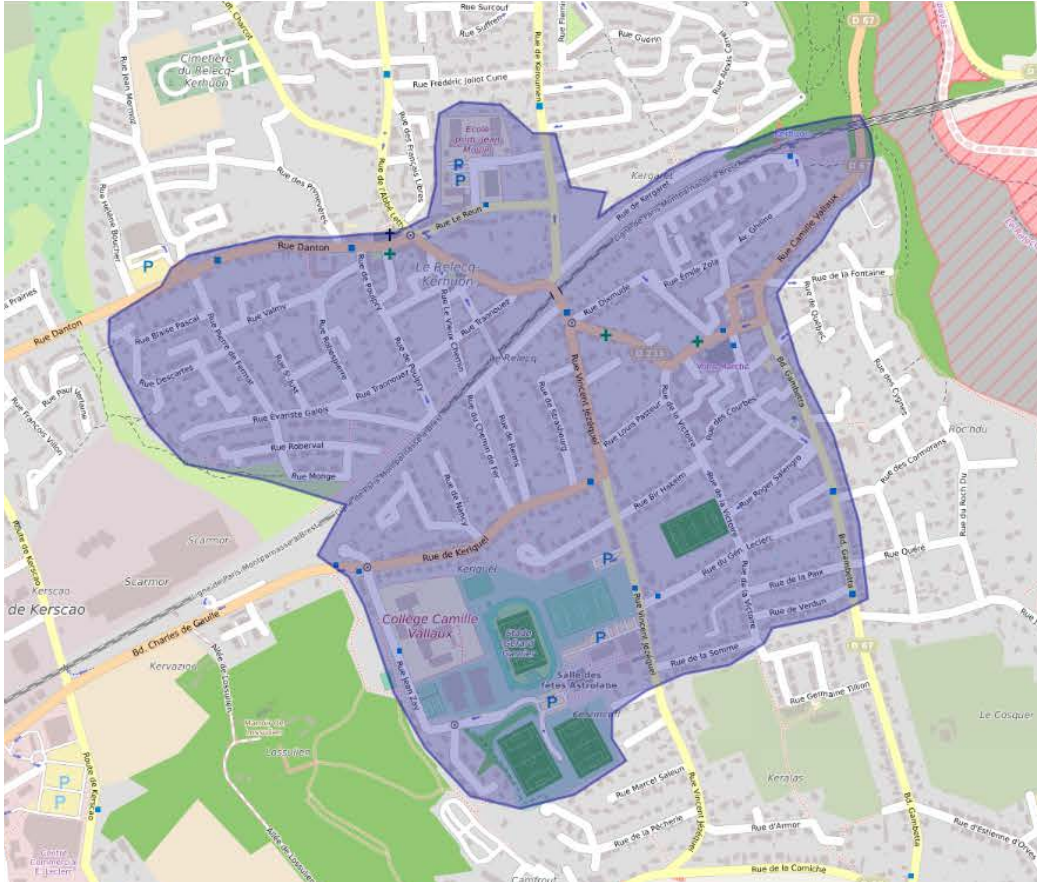
LE CONQUET



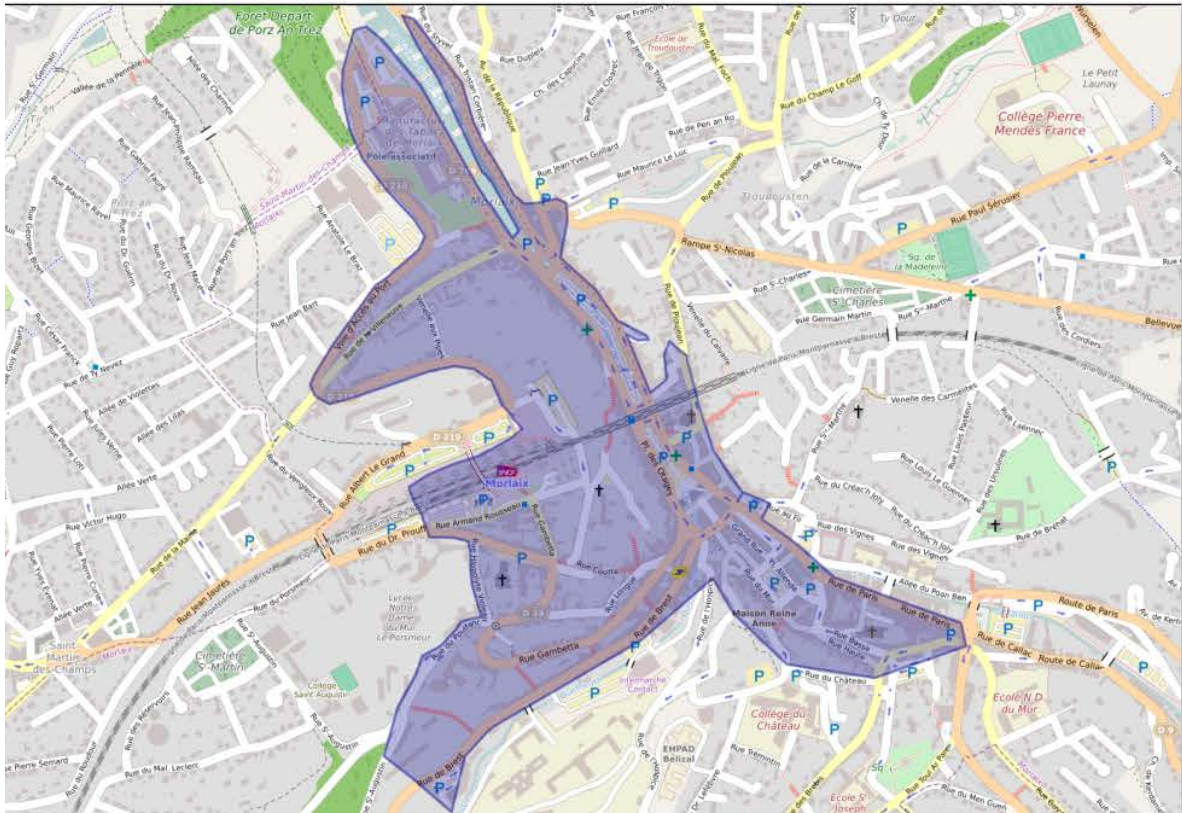
LE GUILVINEC

Voir paragraphe IV article 3 du présent arrêté

LE RELECQ-KERHUON



MORLAIX



PENMARC'H

PORS CARN



KERITY



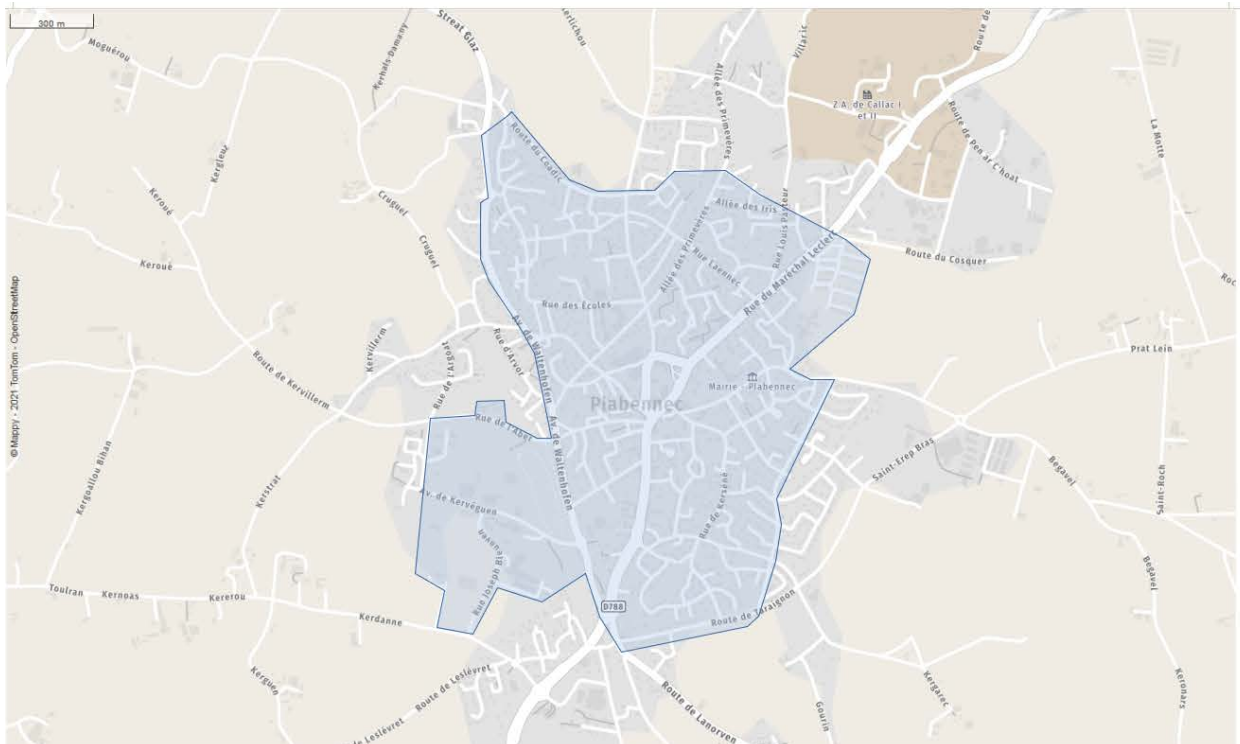
SAINT PIERRE



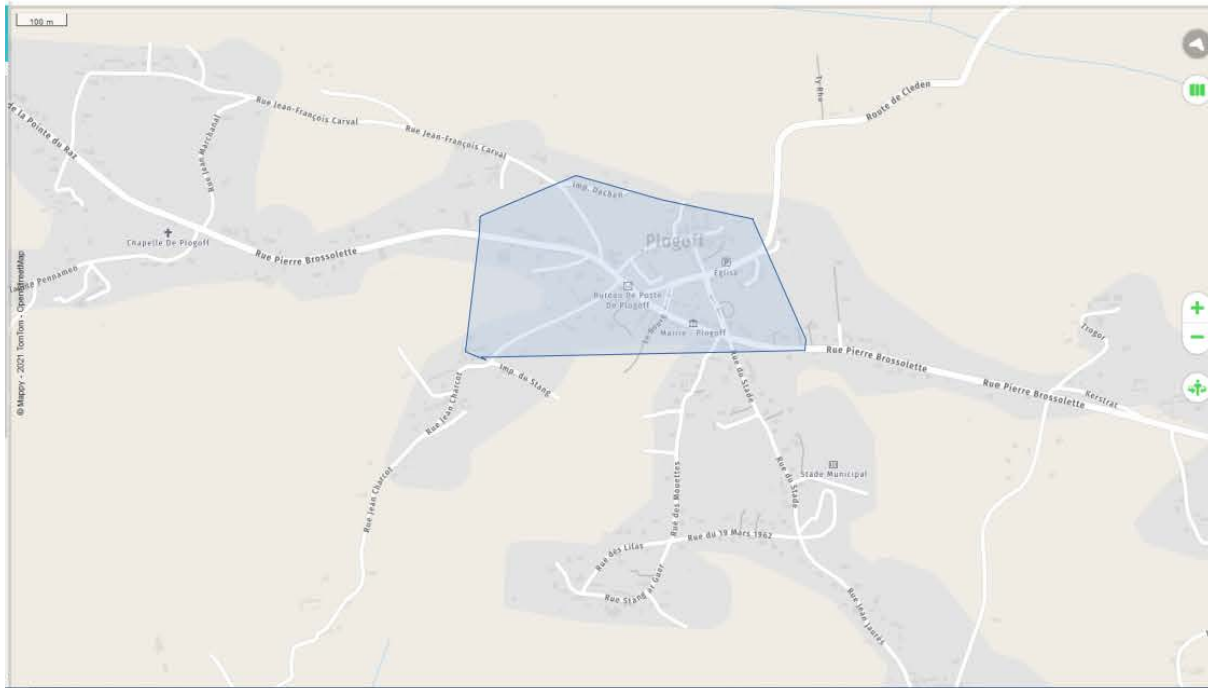
SAINT GUENOLE



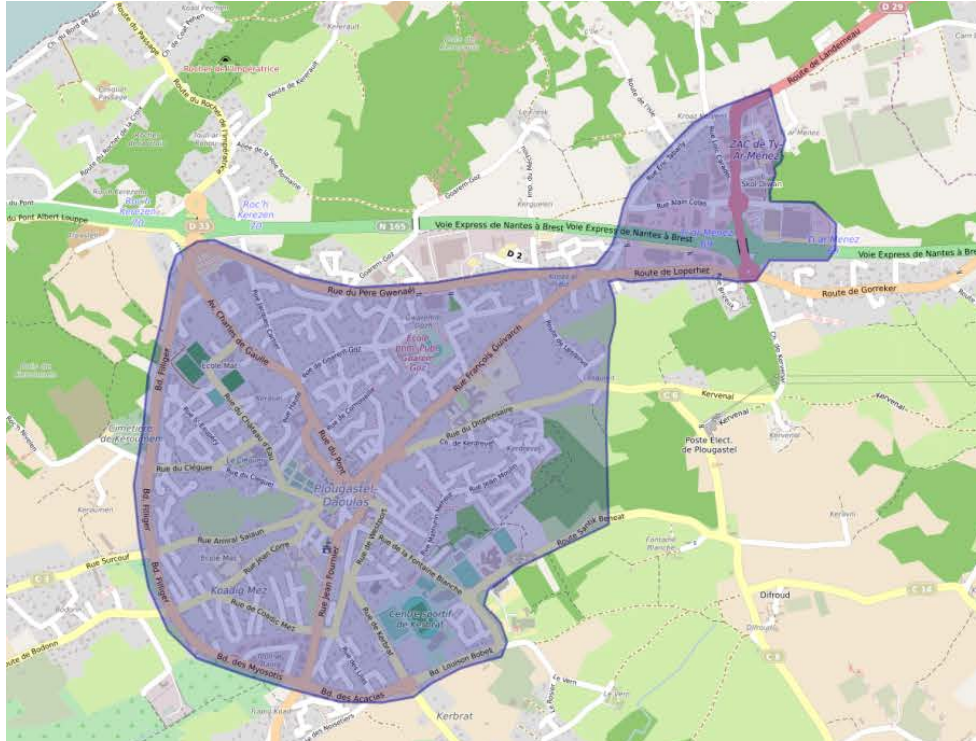
PLABENNEC



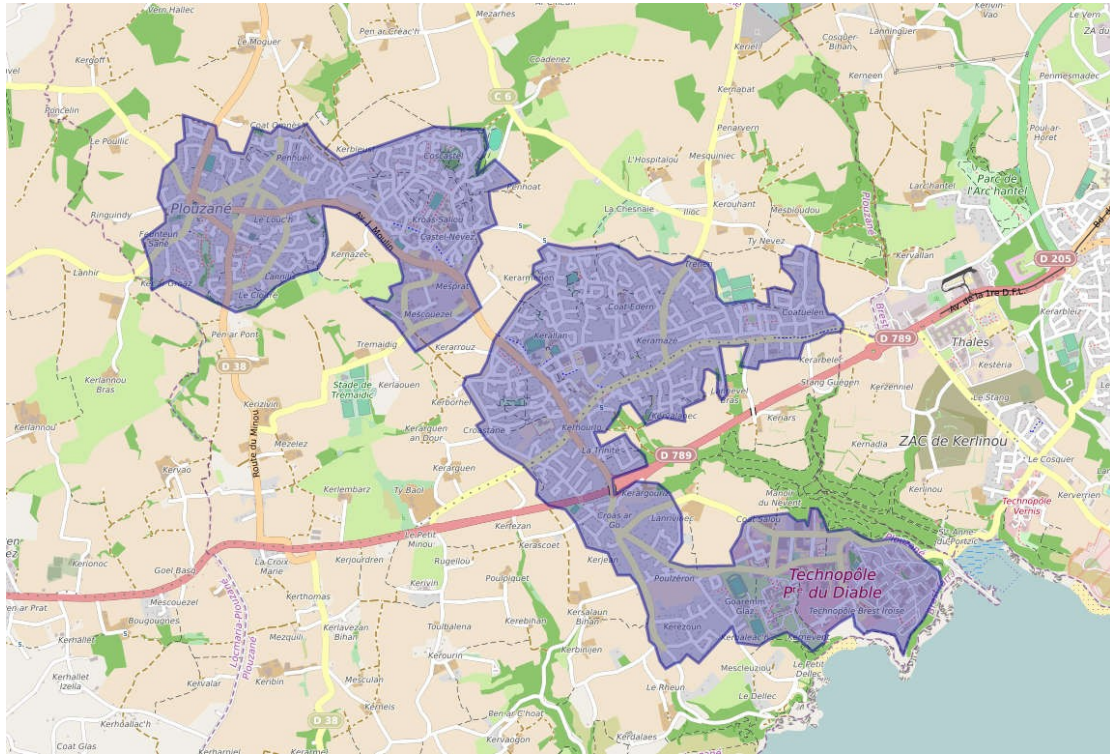
PLOGOFF



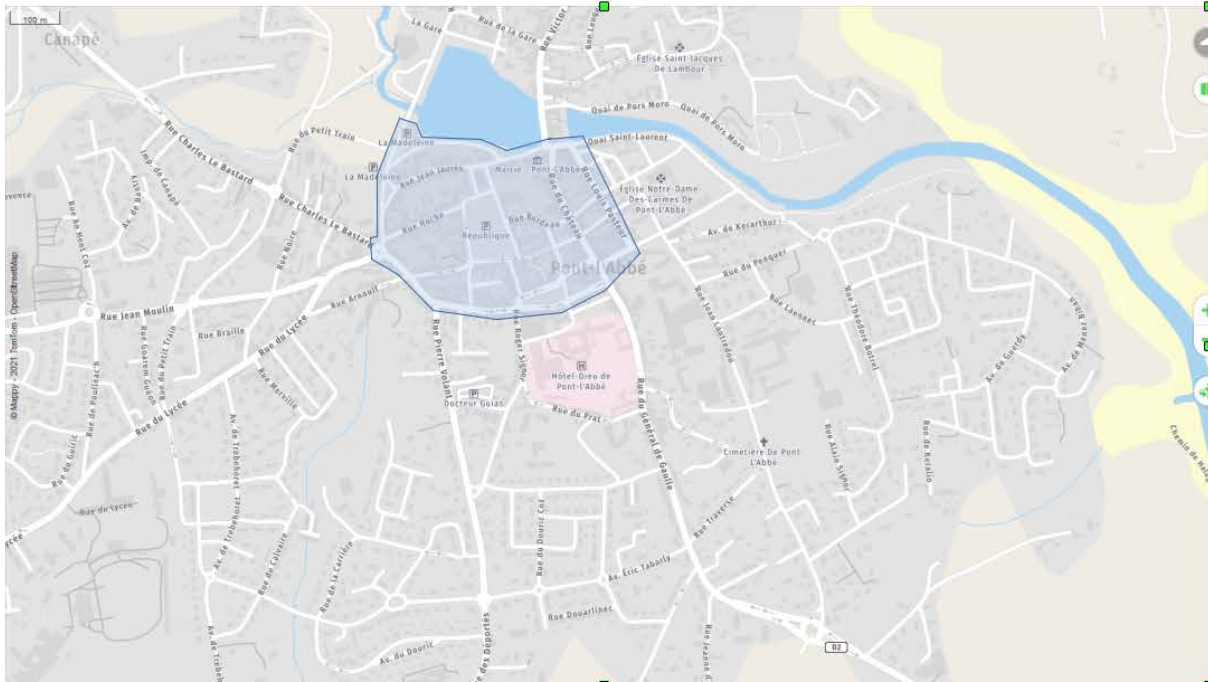
PLOUGASTEL-DAOULAS



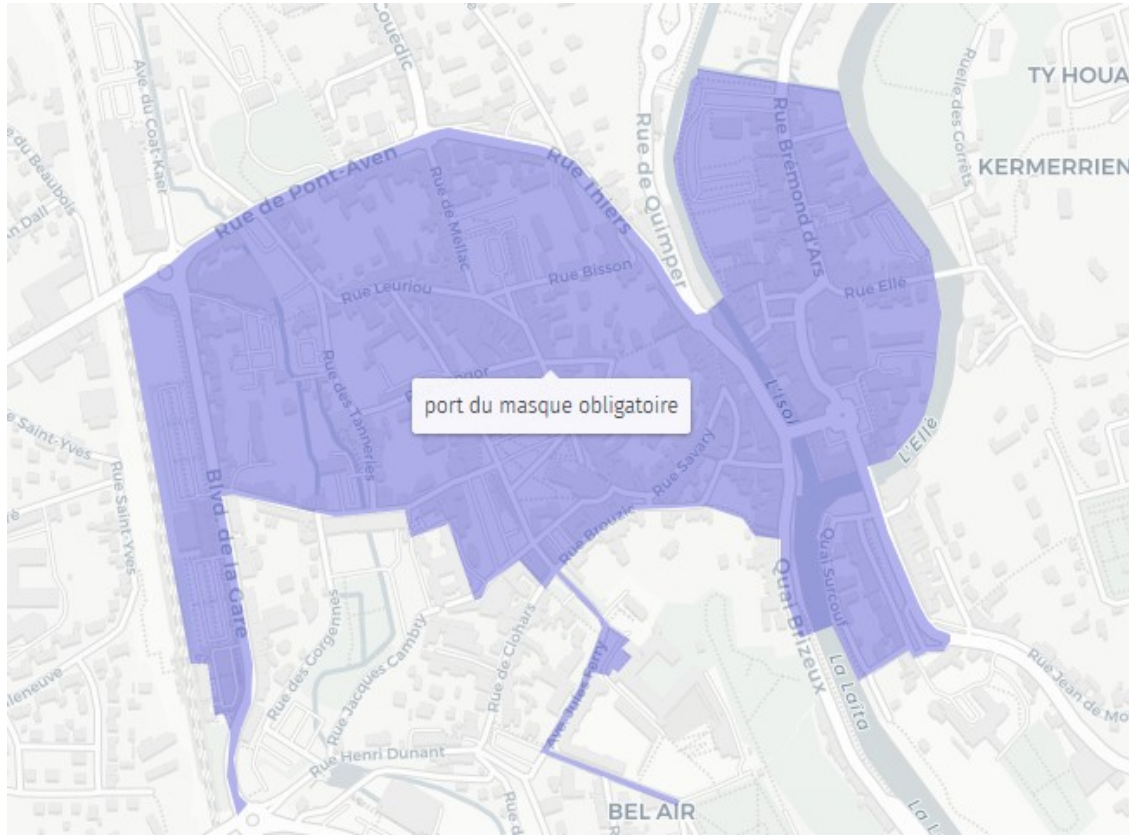
PLOUZANÉ



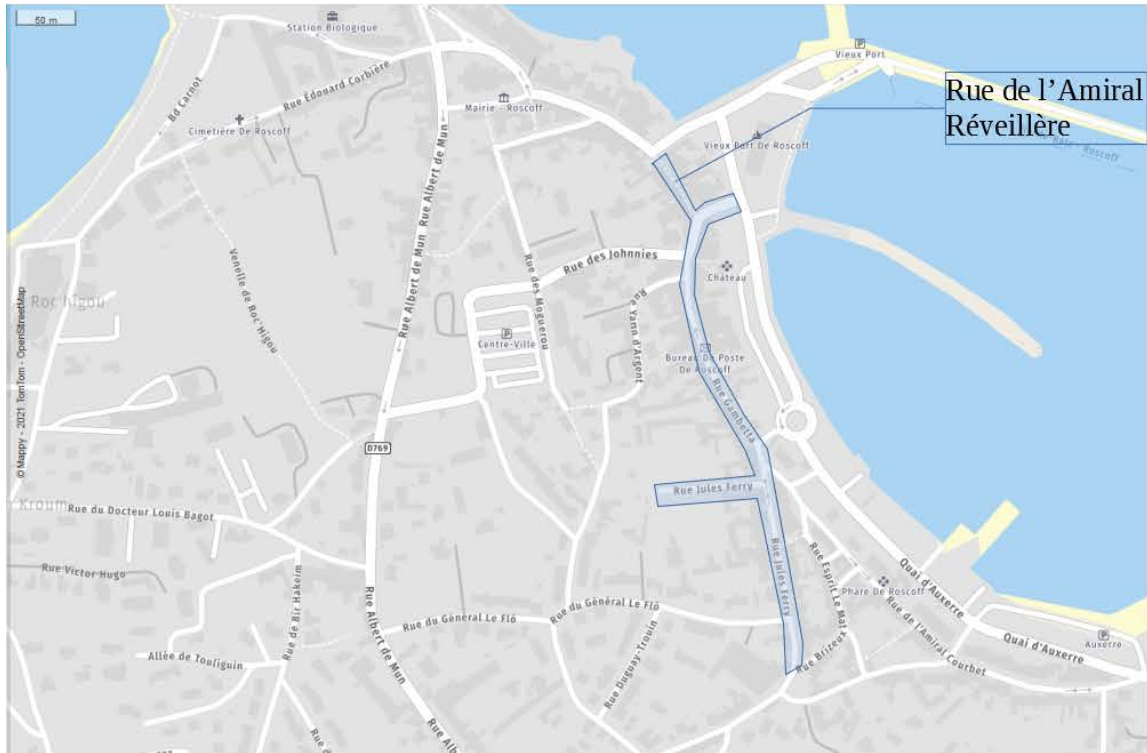
PONT L'ABBÉ



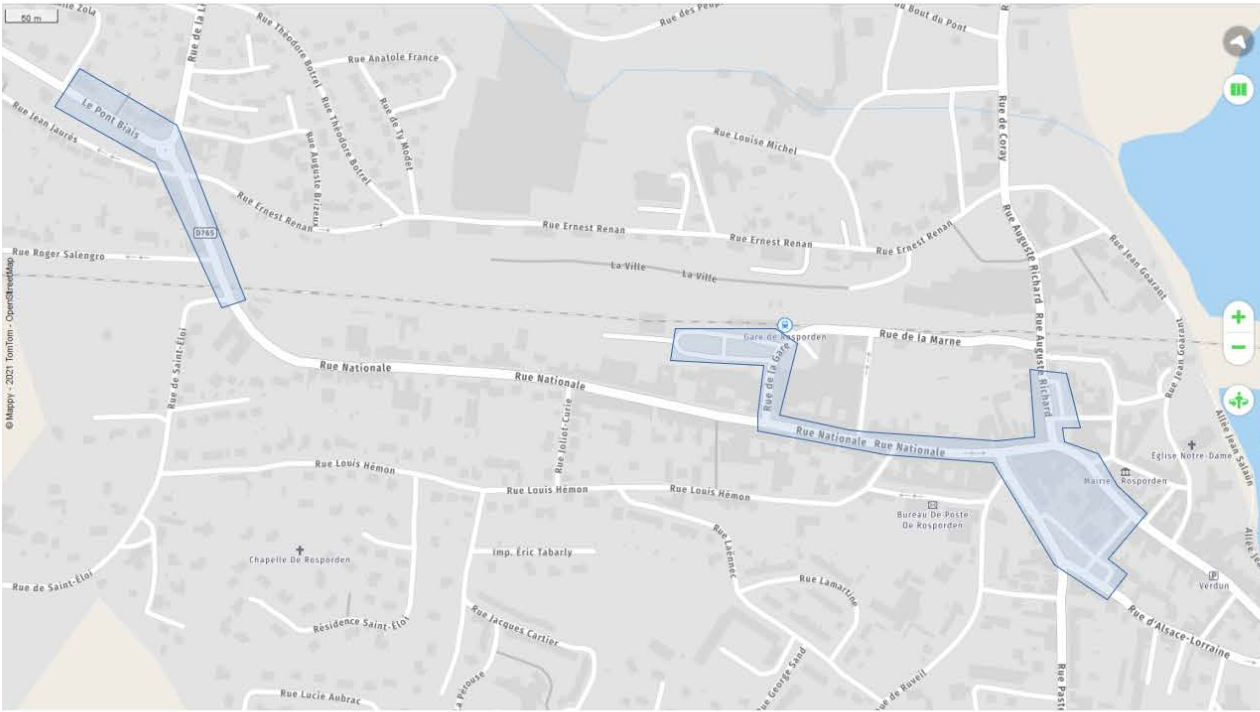
QUIMPERLÉ



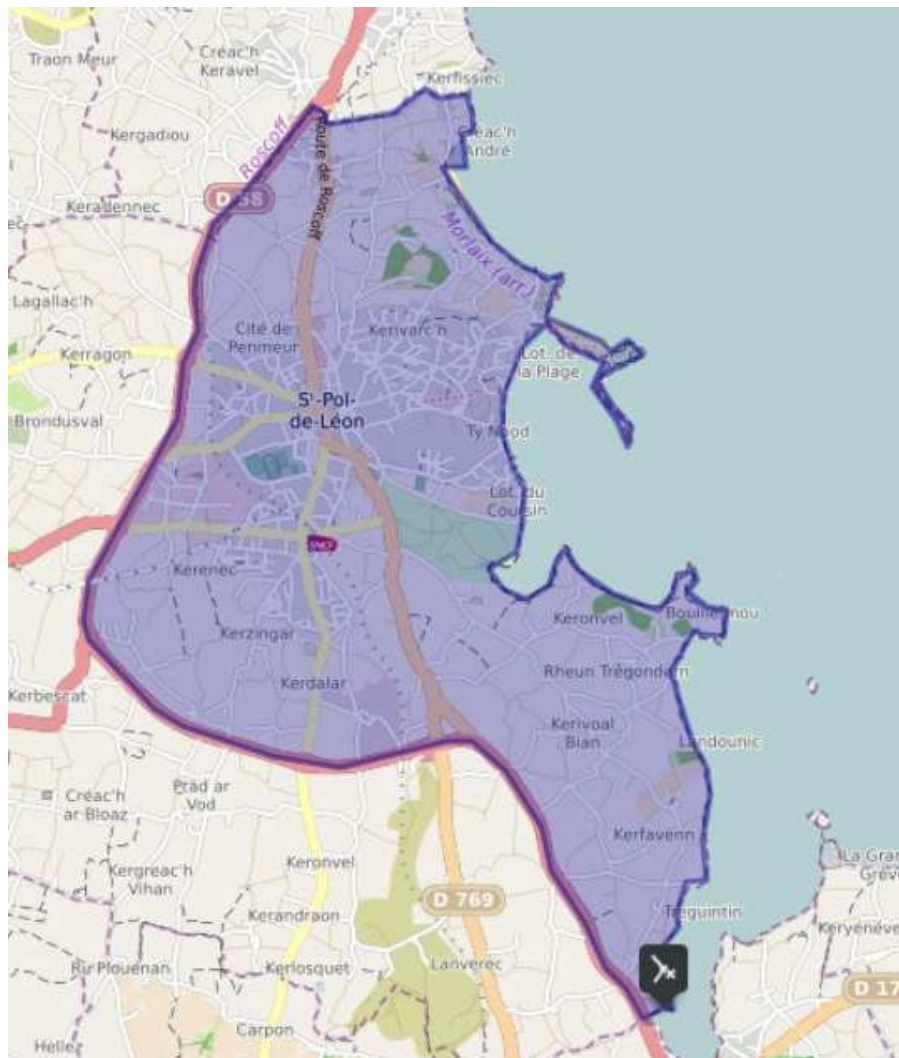
ROSCOFF



ROSPORDEN



SAINT-POL-DE-LÉON



SAINT RENAN

