

# VILLE DE CONCARNEAU

## PROJET D'EXTENSION DU CENTRE D'HEBERGEMENT DES CLASSES DE MER RUE MARECHAL FOCH

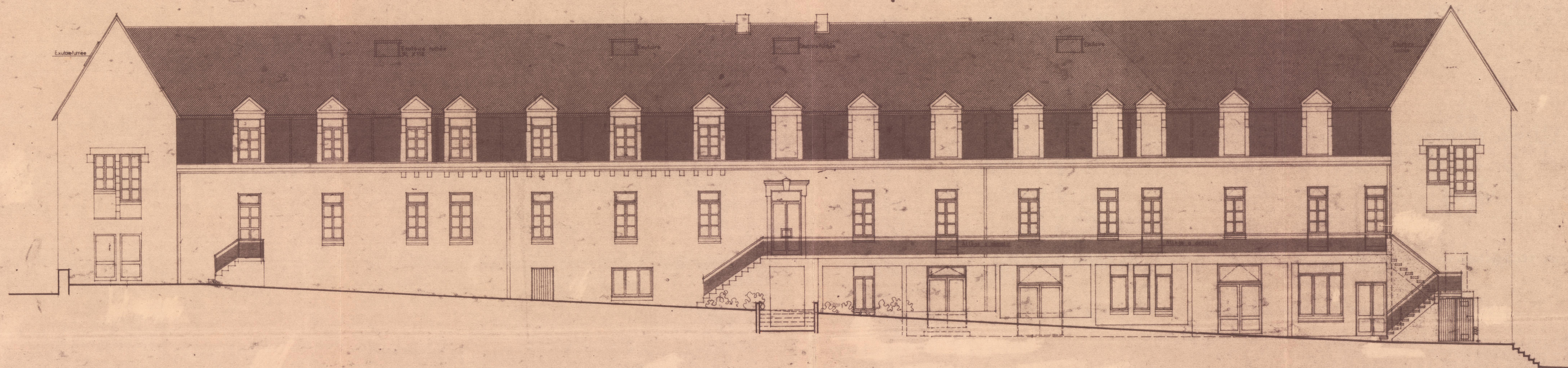
DOSSIER DE CONSULTATION DES ENTREPRISES

FAÇADES & COUPE HEBERGEMENT

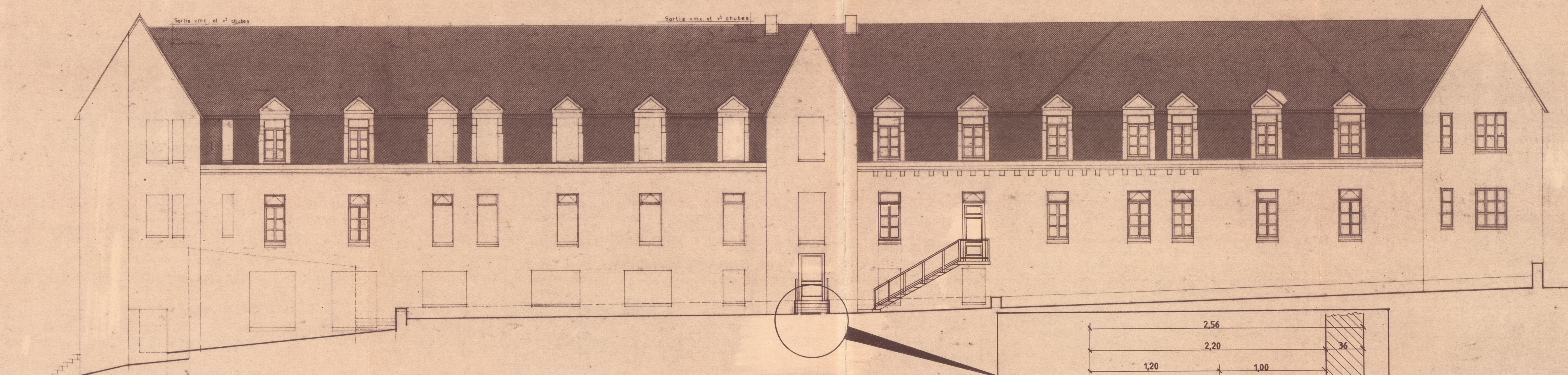
Echelle: 1/100

PLAN n°8

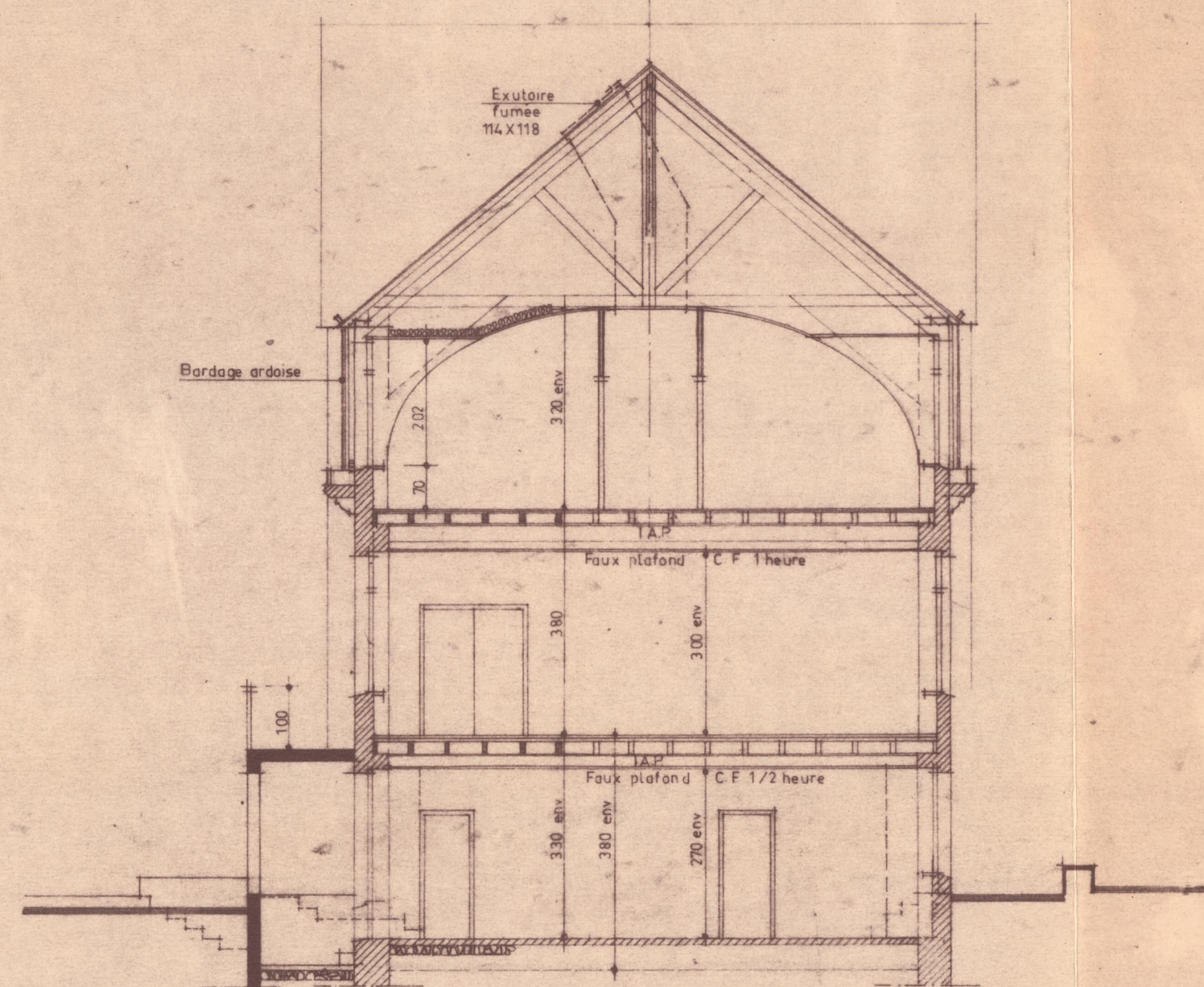
SERVICES TECHNIQUES DE LA VILLE DE CONCARNEAU



FACADE NORD



FACADE SUD



COUPE AA

